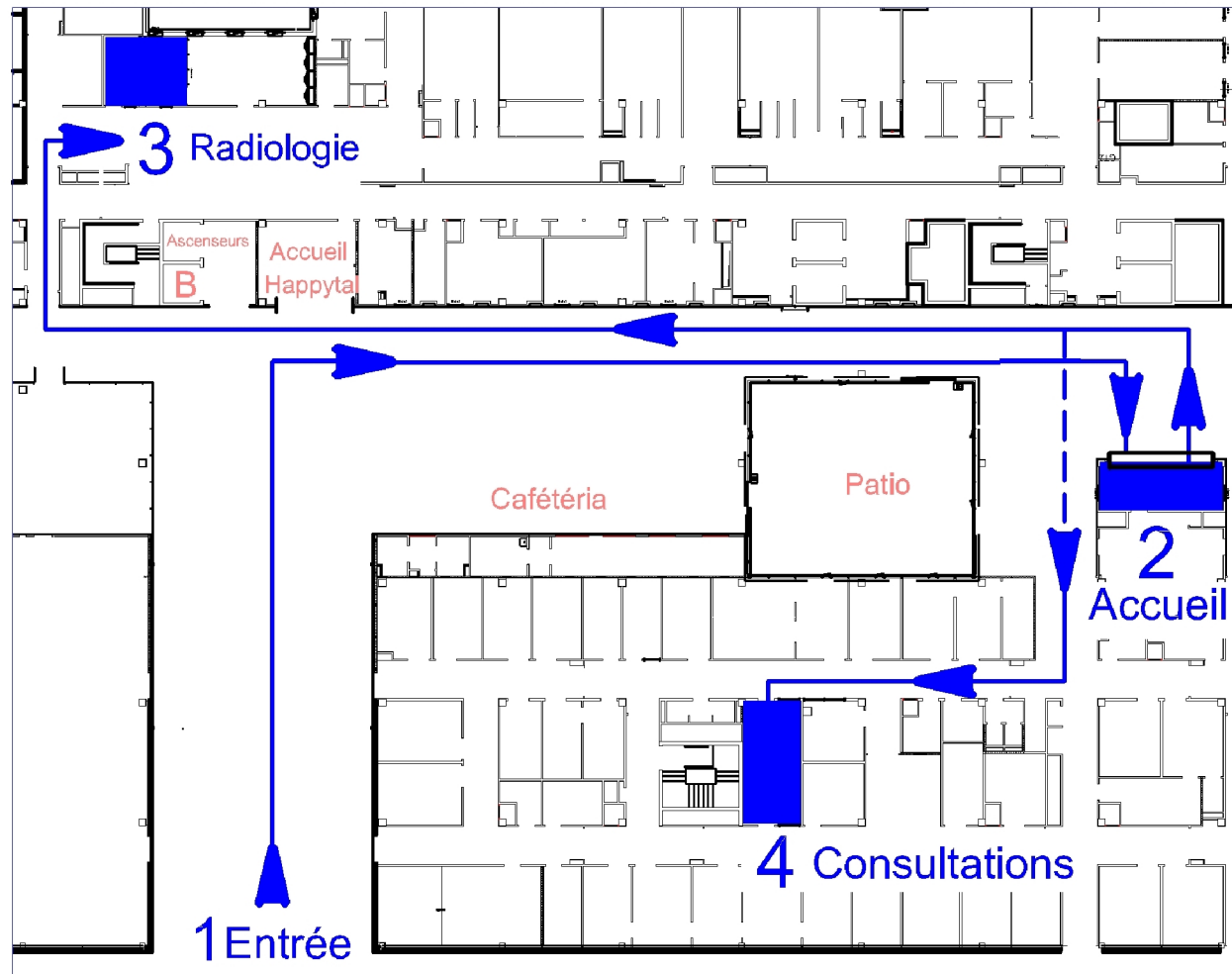


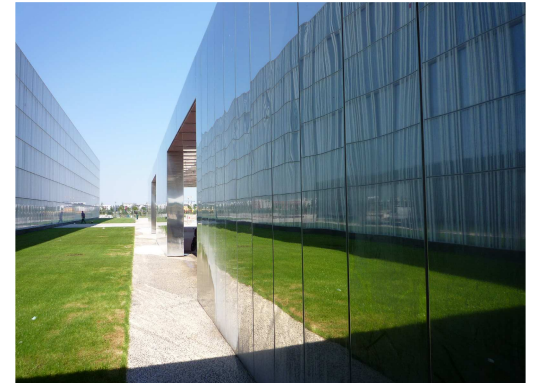
□ Consultation publique SANS radiologie



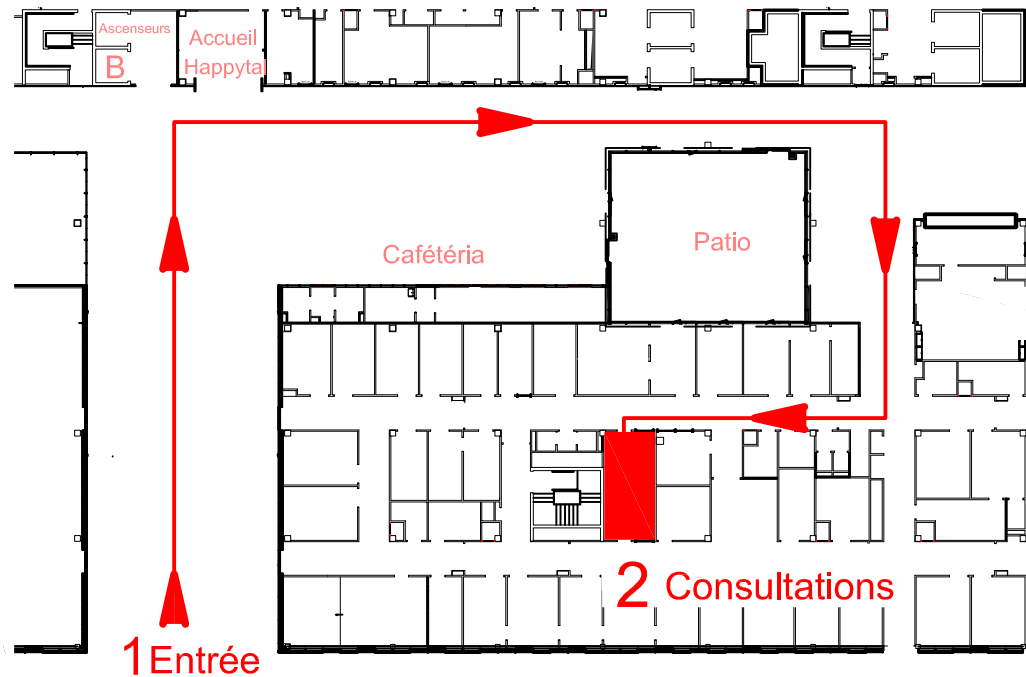


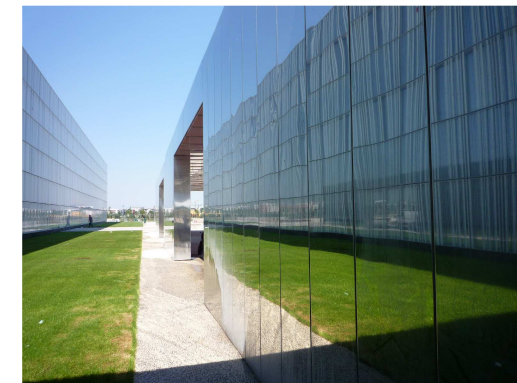
□ Consultation publique AVEC radiologie



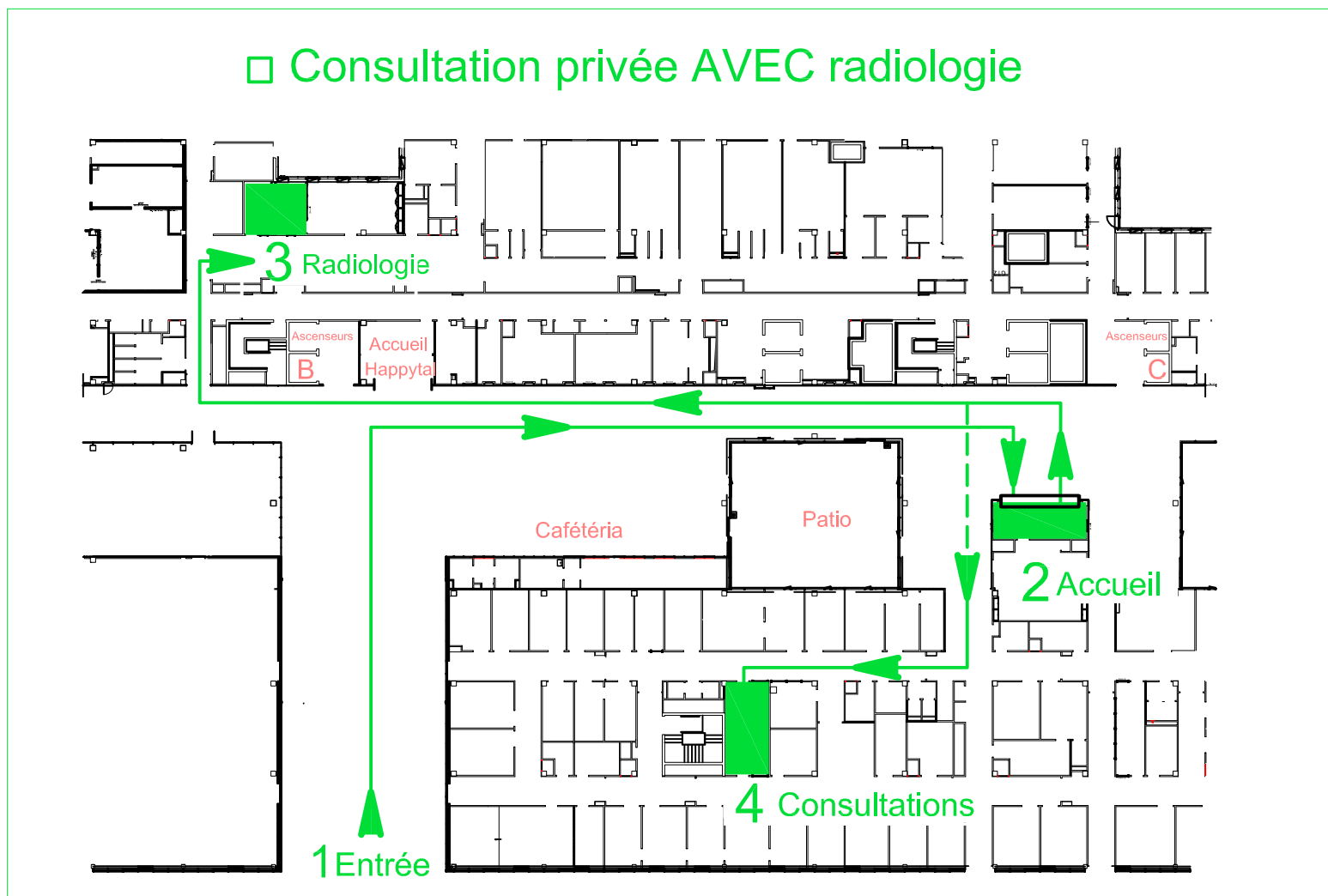


□ Consultation privée SANS radiologie



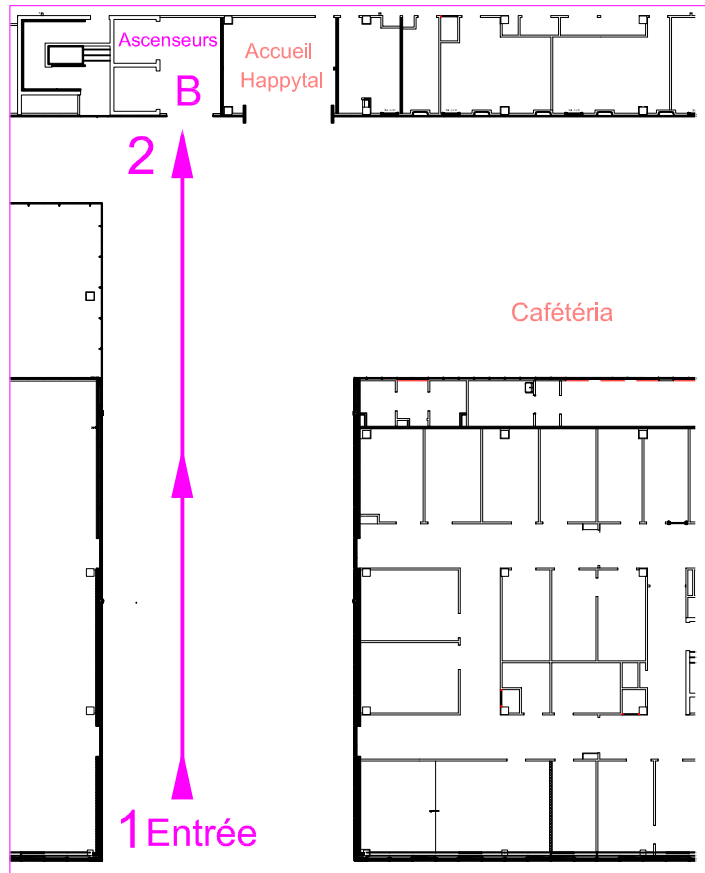


□ Consultation privée AVEC radiologie

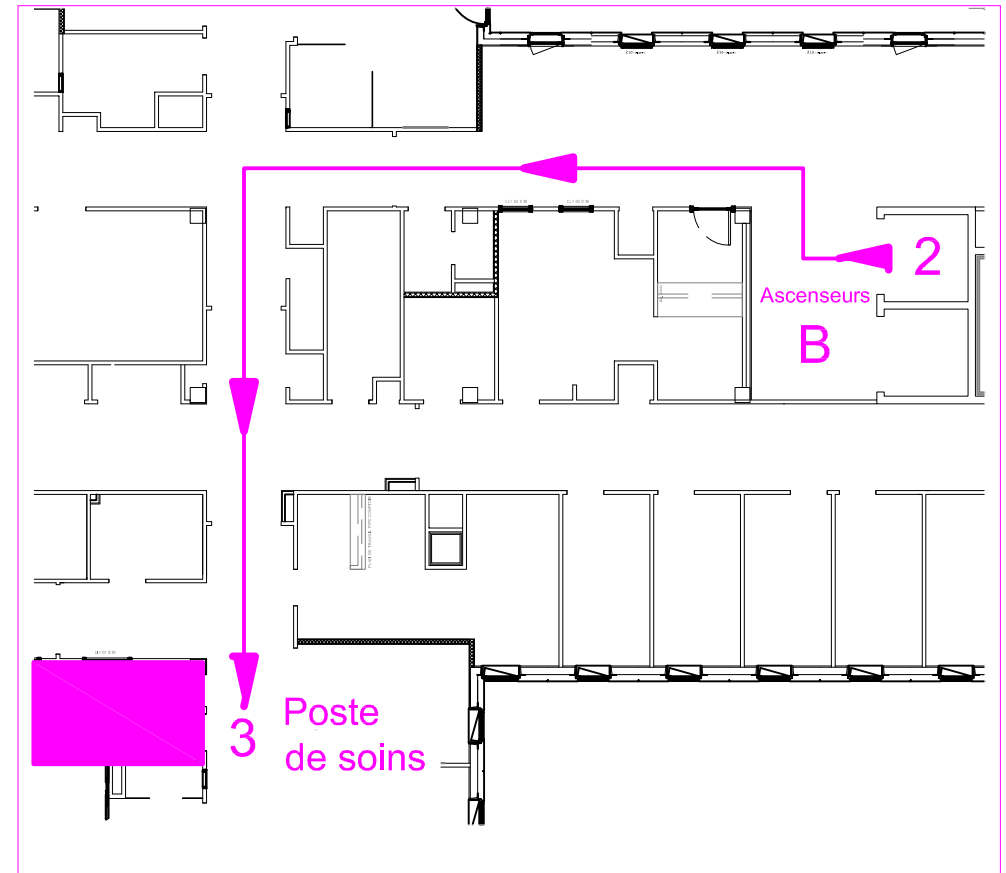




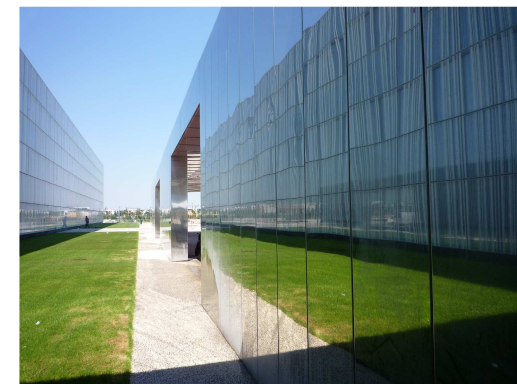
□ Hospitalisation chirurgie ambulatoire



RDC



2ème ETAGE



□ Hospitalisation complète ou Hospitalisation de semaine (HDS)

