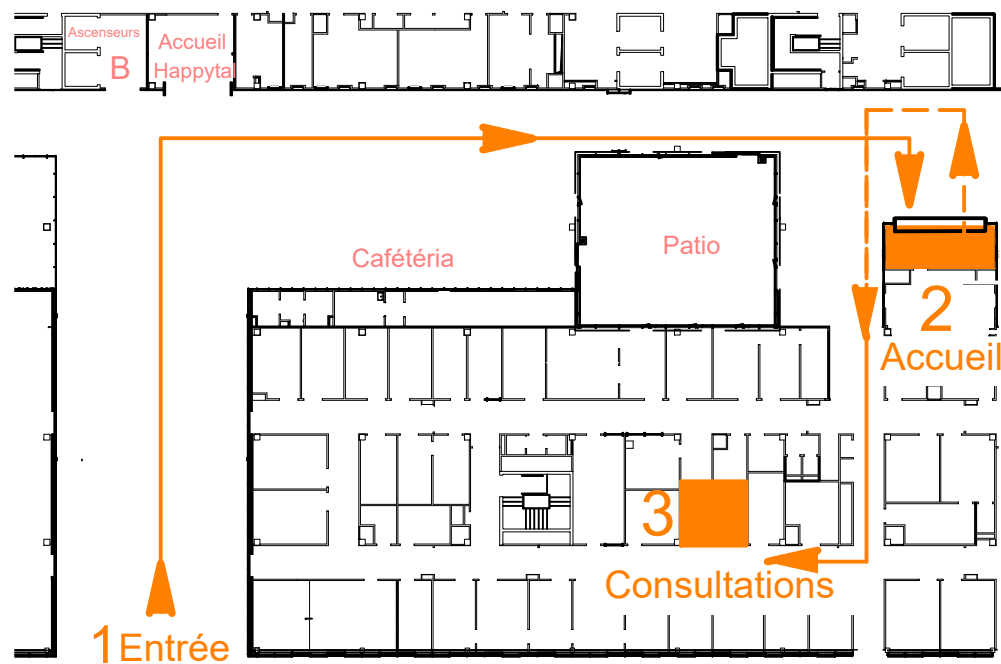


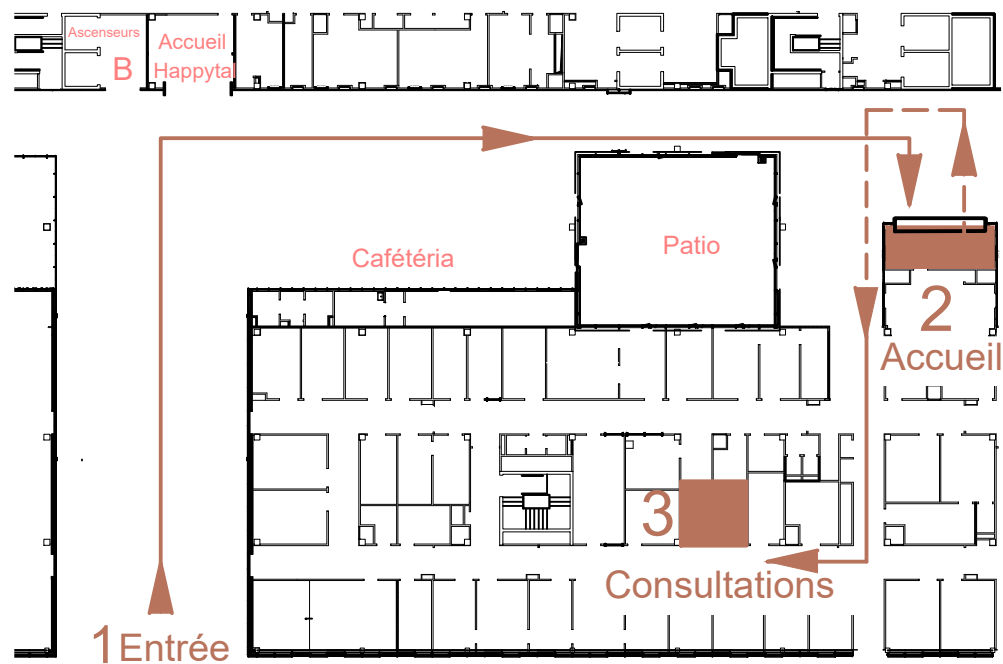


□ Consultation ORL



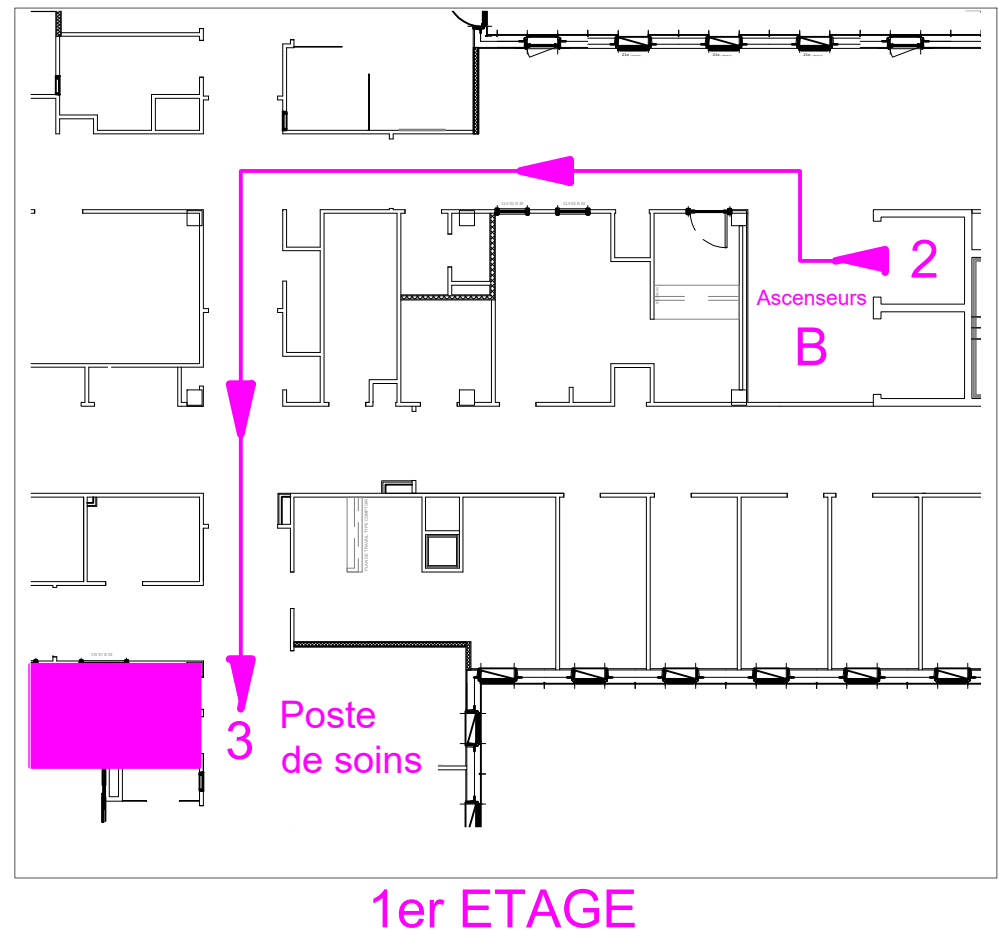
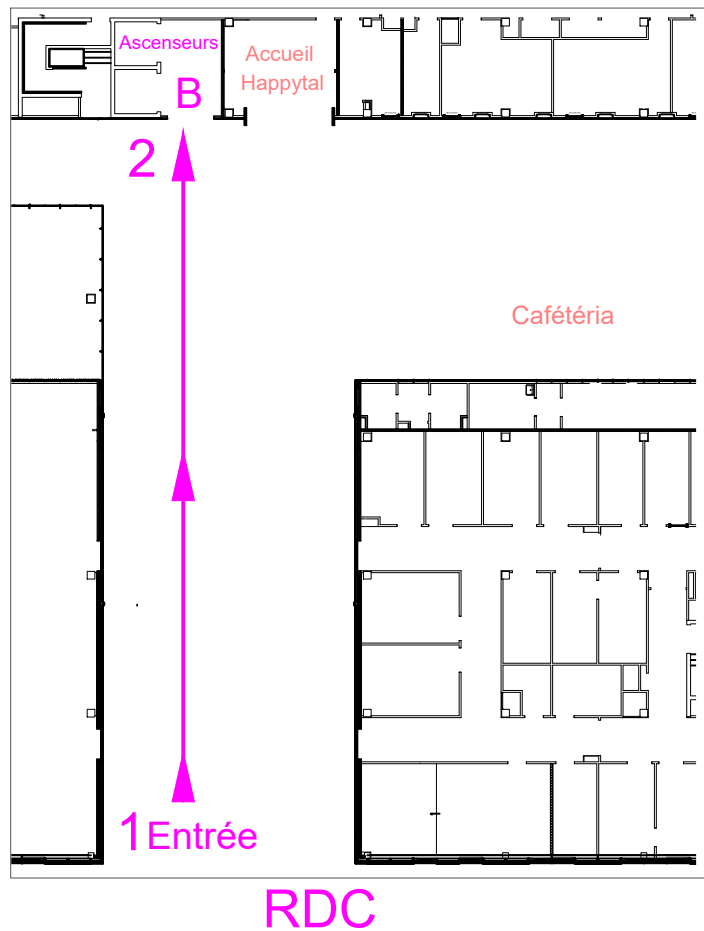


□ Consultation Petite Chirurgie ORL - ORALE - PLASTIQUE



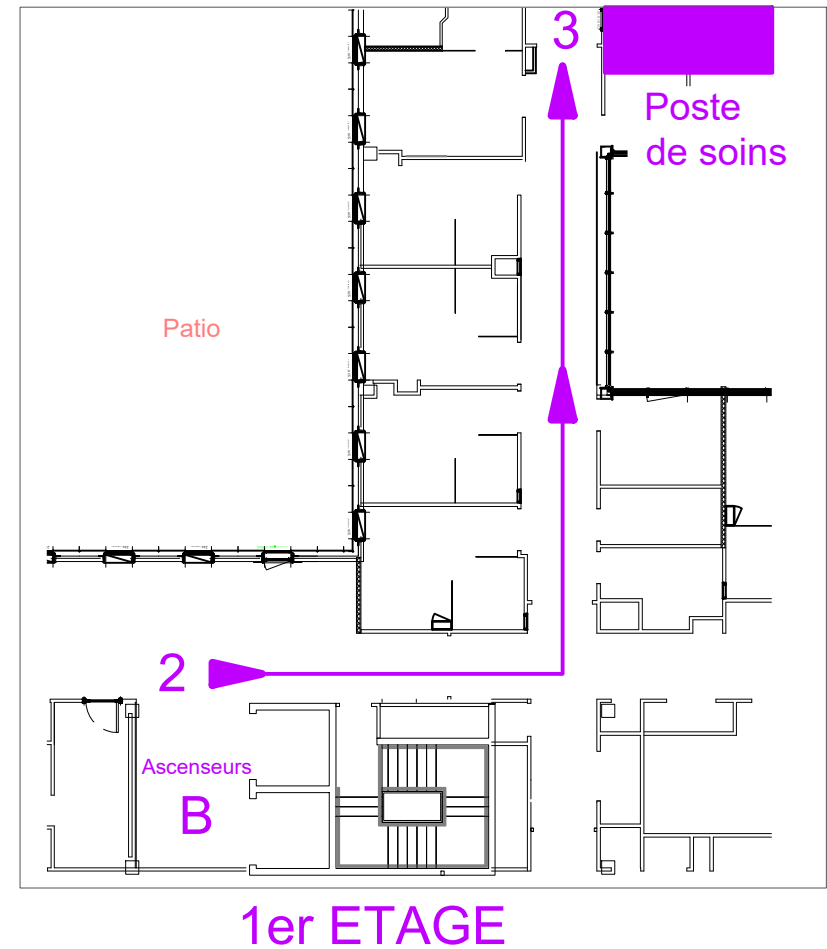
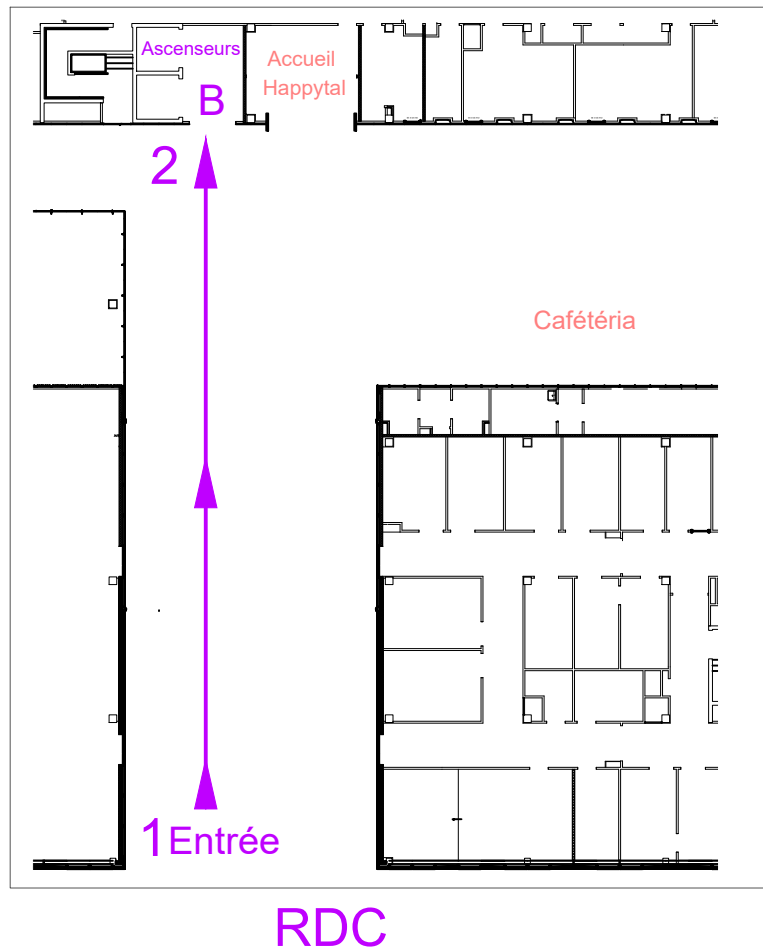


□ Hospitalisation chirurgie ambulatoire





□ Hospitalisation complète ou Hospitalisation de semaine (HDS)



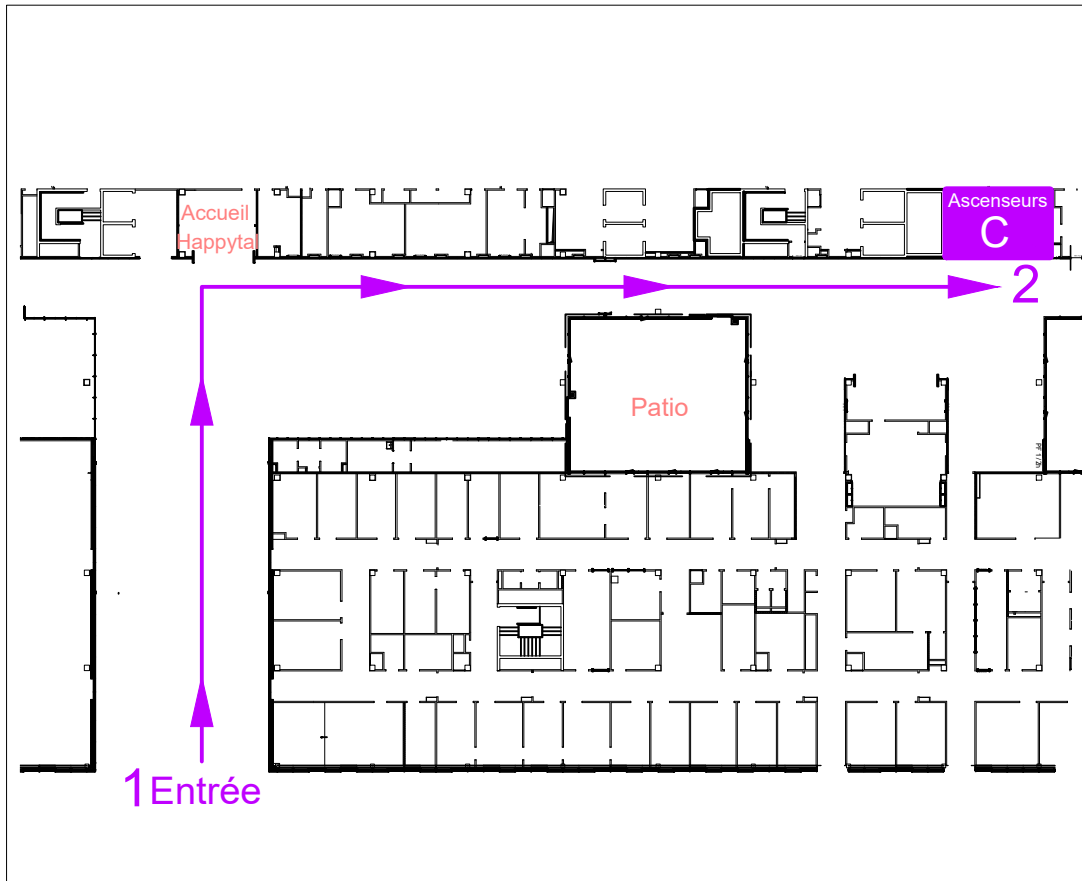


□ Hospitalisation Complète + Hospitalisation De Jour Onco-chirurgie ORL

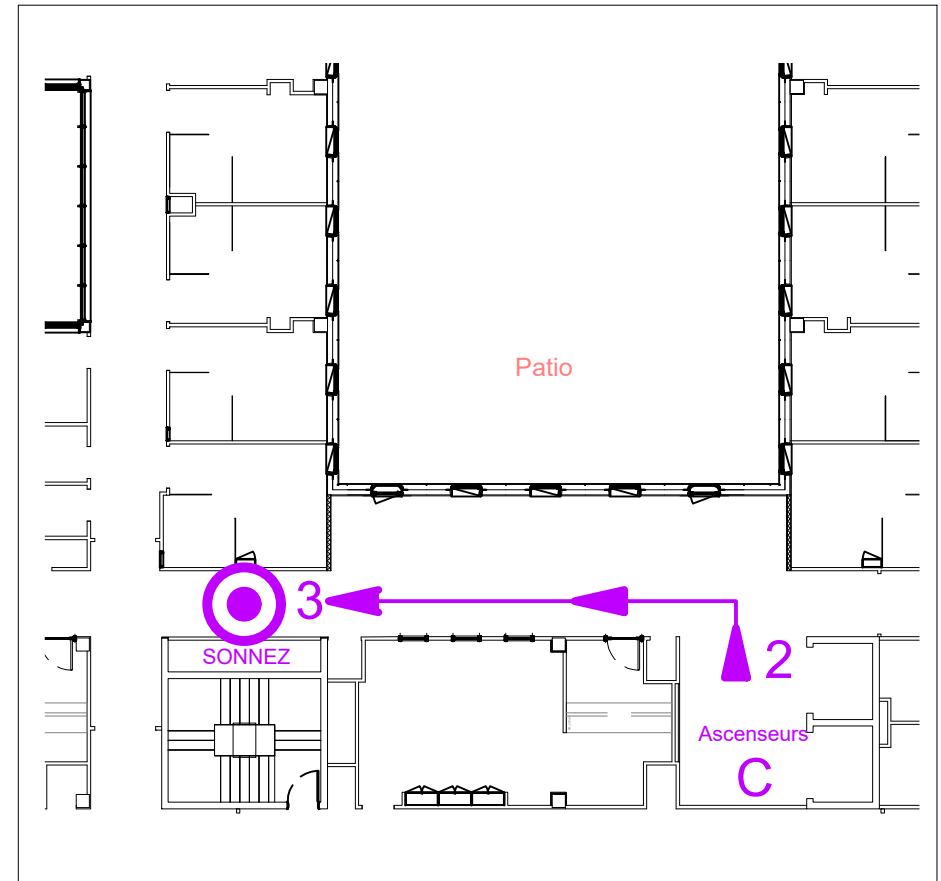




□ Pédiatrie



RDC



2ème ETAGE